

Protective caps

for latches

SPECIFICATION

Plastic (Polyethylene)
black

INFORMATION

Protective caps GN 120 are used in combination with key-actuated locking devices. These prevent dirt from entering the key mechanism and the locking device and can be mounted as required in a 90° grid pattern together with the housing of the locking device.

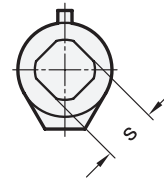
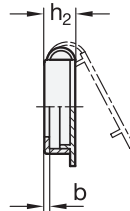
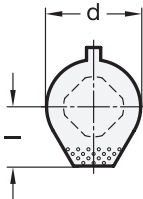
Please note: The clamping range $A_1 \dots A_9$ and/or the latch distance A is reduced by the dimension „b“.

Protective caps GN 120 are suitable for the following latches:

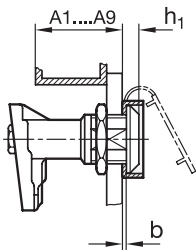
- Mini-Latches GN 115.1 (see page 1504)
- Mini-Latches GN 115.6 (see page 1505)
- Latches, lockable GN 115 (see page 1462)
- Latches, not lockable GN 115 (see page 1465)
- Hook-type latches GN 115.8 (see page 1474)
- Latches GN 119 (see page 1482)
- Rotary clamping latches GN 516 (see page 1542)
- Rotary clamping latches GN 516.1 (see page 1544)
- Stainless Steel-Rotary clamping latches GN 516.5 (see page 1546)

TECHNICAL INFORMATION

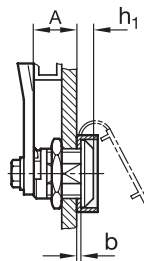
- Plastic characteristics (see page A2)



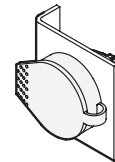
Examples of application



Latches GN 119



Latches GN 115



GN 120

Description	d	s	b	h1	h2	l	For latches	
GN 120-29-14,5	29	14.5	2	6	11	18.5	GN 115.1 / GN 115.6	3
GN 120-36-20,5	36	20.5	2	8	12	23	GN 115 / GN 115.8 / GN 119 / GN 516 / GN 516.1 / GN 516.5	5